

# Fit and Flare Lace up Dress





**Requisites:-**

**Stretch knit fabric, preferably something like Bon Bon, Trilobal, Viscose Lycra, Ploy Rayon, Valencia**

**2m**

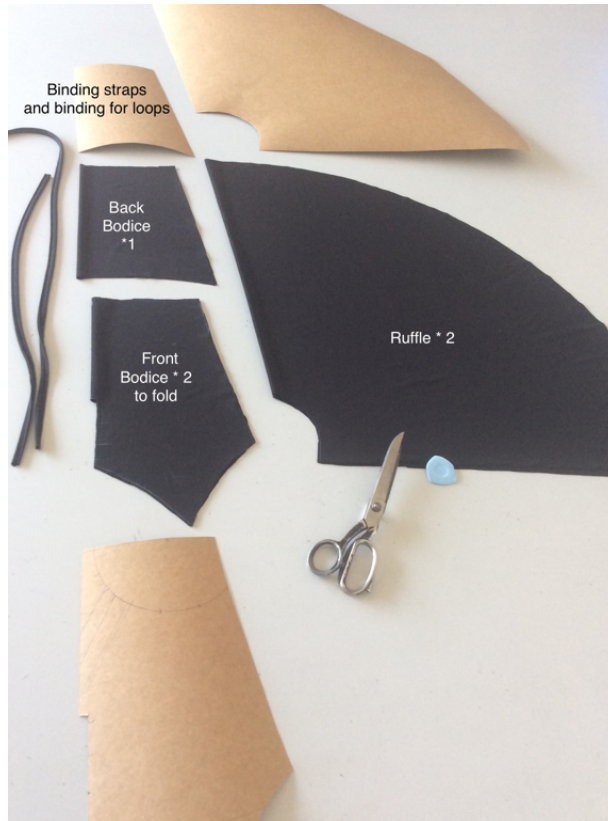
**6mm knitted elastic**

**Sewing machines, preferably an overlocker and plain machine**

**Sewing thread**

**Binding attachment for sewing machine**

**Layout and cutting**



**Cut 2\* front bodice, mark four equidistant notches along placard stand starting at 7mm from top at neckline.**

**Cut 1\*bodice back**

**Cut 2\*ruffle to fold**

**Sewing:**



**Cut 2\* binding strips 4.2cm wide, next to selvedge of fabric along the length by 2m.**

**Sew binding. If you don't have a binding attachment make the strips wider app 5cm and sew folded in half into binding which you can pull through with a hairpin**

**Cut 8\* 6cm pieces of your binding for the bodice, fold in half and attach to 1 section of bodice as in image above.**

**Fit the 2nd bodice piece over the piece to which you've attached the binding, right sides together. Sew the bodice together at the neck edge, around the placard.**

**Measure the straps**

**Estimated measurements:**

**Size 30-32 36cm, add 1cm per size up, but it's best to drape the straps over your shoulders and set the measurement. Add 4cm which you can trim off on the final fitting.**

**Slip the straps at the apex of the neck and arm edge. Stay stitch.**

**Sew the arm extension of the bodice closed.**





**Cut the knitted elastic 6cm smaller than the top measurement of the bodice back. Stretch to fit and overlock in place.**

**Place back of bodice over front, right sides together, fold the elastic extension backward over the front bodice. Sew at side seams, creating a back seam across the top of the back of the bodice to stitch the elastic as a top seam of 6mm.**

**Sew the side seams of the skirt together.**

**Place the bodice inside the skirt waist, right sides together. Stitch the skirt to the bodice.**

**Turn to right side.**

**Neaten hem, hem at 1.5cm**

**Fit the garment, measure the straps from front to back, placing at 8cm from side seam at back.**

**Trim, sew the straps to the back on the elastic seam.**

**Thread extra binding into bodice loops, trim at a comfortable length.**

**Wear**







