

## *Fashion Plate Patterns*



*PDF Download*



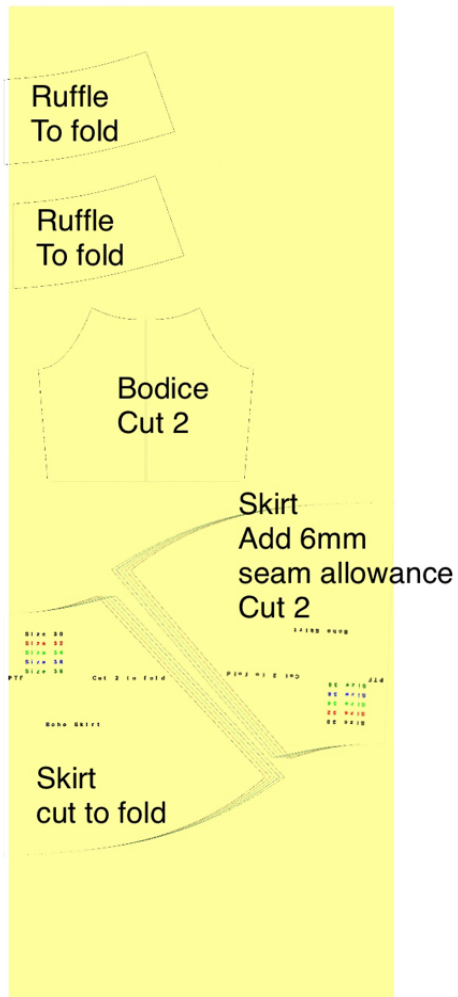


## *Fashion Plate Patterns*



*PDF Download*

# Layout



## Requirements

1.5 m knit/Jersey fabric  
Poly cotton knit  
Single cotton knit  
Double knit  
Poly Rayon  
Viscose Lycra  
5m lace trim of choice(optional)



6mm knitted elastic

### Size Measurements

Size	Bust	Hips	..
30	81-84	88-91	XS
32	85-88	92-95	XS
34	89-93	96-100	S
36	94-98	101-105	M
38	99-103	106-111	L

# Downloading and making your pattern

## General instructions

Download the PDFs there are usually two or more, each PDF is titled.

You can print out the full pattern sheets if you have access to a printer, such as a Canon large format printer. Set this printer to print out actual size. Print only the pages in your required size.

You can print out the pattern on a home printer in A4(letter size) sections, and stick them together.

Use Adobe Reader or Acrobat to format your print. This is free software from Adobe and can be used in any computer. Use “Print Set Up” to format. Set to “Poster”, tick “Tile”, tick “Add Cut Marks” overlap 0.5cm. Set paper size to A4.

Print only the required size, if sizes are printed onto one sheet all lines are colour coded for easy reference and cutting. Your printer will print all necessary sections with

cut marks on each numbered sheet so that you can easily stick sections together.

Print out the pattern make-up instructions and read them first, before starting your project.

Loads of extra info available on our blog  
[fashionplatesewingpatterns.tumblr.com](http://fashionplatesewingpatterns.tumblr.com)

Cutting

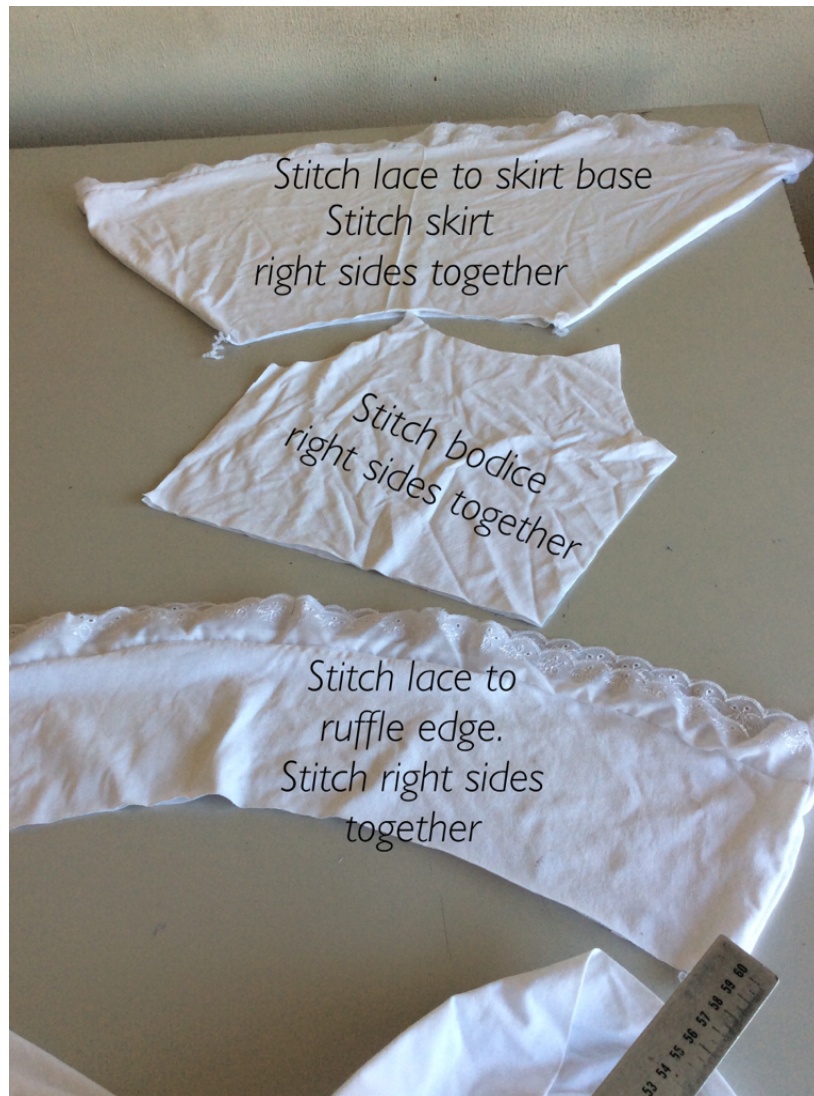


Cut 2 ruffles to fold (cut off section on ruffle edge if adding lace 1cm narrower than the lace you are using)

Cut 2 Bodice as above

Cut 2 skirts to fold, or one to fold and the other with back seam (add 6mm seam allowance) if adding lace shorten hem 1cm less than lace width

Sewing



Attach lace if using to ruffle edges(6mm seam allowance).  
Stitch ruffles right sides together. Press seams.  
Stitch back seam in skirt if not cut to fold. Press  
Add lace to edge of skirt.  
Stitch right sides together. Press  
Stitch bodice sections right sides together. Neaten armhole  
edge, hem at 6mm. Press.



Snip a notch at center Front and back of bodice and ruffle





Stitch ruffle to bodice



Attach skirt to bodice at waist, right sides together  
Measure comfortable but firm length of elastic for waist and around shoulders  
Recommended length of waist elastic is 40cm for size 30(add 3cm per size)  
Stitch elastic into a circle  
Stitch elastic to skirt edge of waist seam and neck edge.



Stitch bodice to skirt.  
Right sides together





Hem neck edge.

Press

Wear

